



DBV

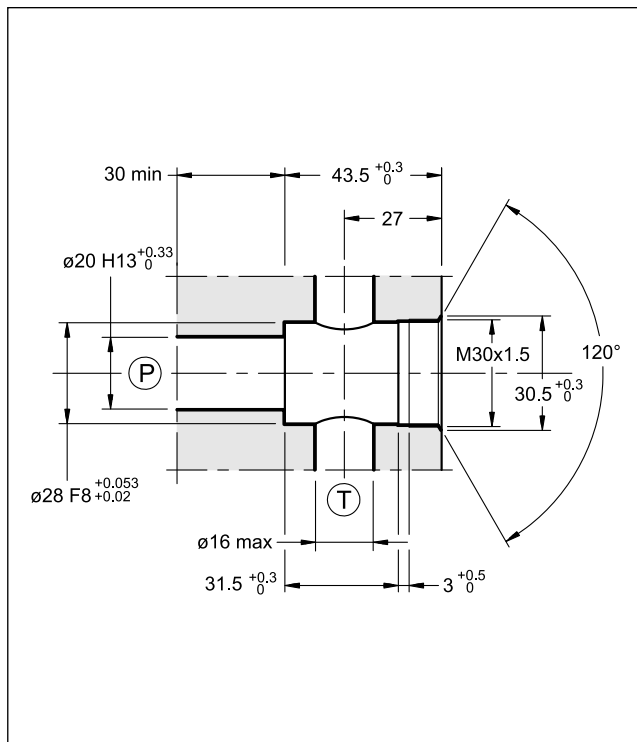
DIRECT OPERATED PRESSURE CONTROL VALVE

SERIES 10

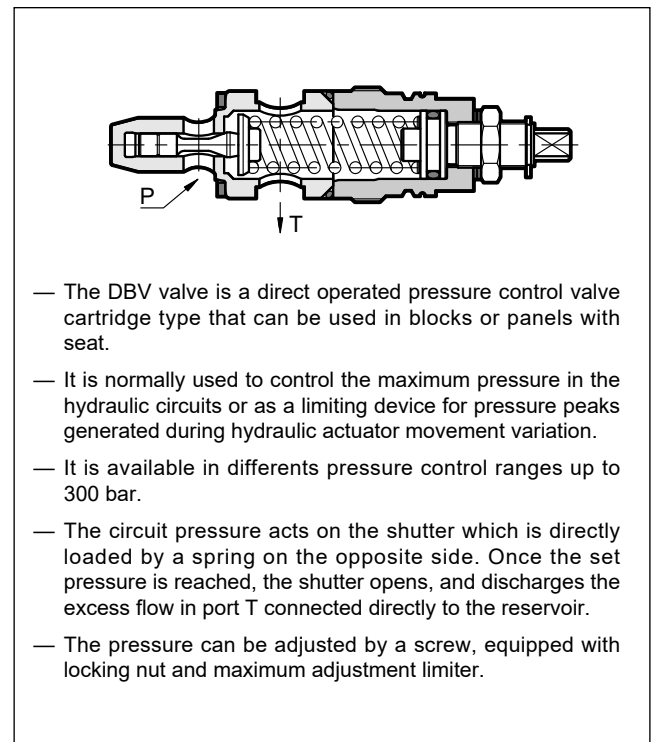
CARTRIDGE TYPE

p max 380 bar
Q max 120 l/min

SEAT DIMENSIONS: D-10E



OPERATING PRINCIPLE

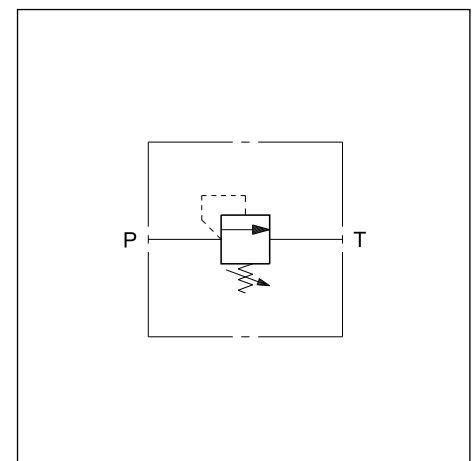


PERFORMANCES

(measured with mineral oil of viscosity 36 cSt at 50°C)

Max working pressure	bar	380
Minimum controlled pressure and pressure drop	see diagram	
Maximum flow rate	l/min	120
Ambient temperature range	°C	-20 / +60
Fluid temperature range	°C	-20 / +80
Fluid viscosity range	cSt	10 ÷ 400
Fluid contamination degree	According to ISO 4406:1999 class 20/18/15	
Recommended viscosity	cSt	25
Mass	kg	0,25
Surface treatment: electrolytic zinc covering	Fe/Zn 8/B ISO 2081	

HYDRAULIC SYMBOL



1 - IDENTIFICATION CODE

D	B	V	-	/	10	/	K
----------	----------	----------	----------	----------	-----------	----------	----------

Direct operated pressure control valve
Cartridge type

Pressure adjustment range:

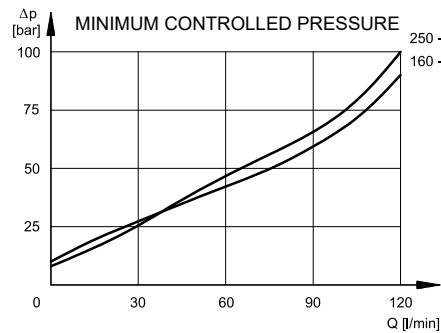
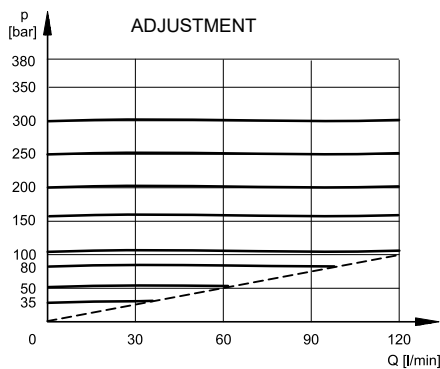
035 = up to 35 bar	160 = up to 160 bar
050 = up to 50 bar	200 = up to 200 bar
080 = up to 80 bar	250 = up to 250 bar
100 = up to 100 bar	300 = up to 300 bar

Seals:
N = NBR seals for mineral oils (**standard**)
V = FPM seals for special fluids

K = Adjustment knob
(omit for adjustment with hex screw - **standard**)

Series No. (the overall and mounting dimensions remain unchanged from 10 to 19)

2 - CHARACTERISTIC CURVES (values obtained with viscosity of 36 cSt at 50°C)



P-T pressure drops with screw set at minimum pressure control

3 - HYDRAULIC FLUIDS

Use mineral oil-based hydraulic fluids HL or HM type, according to ISO 6743-4. For these fluids, use NBR seals (code N). For fluids HFDR type (phosphate esters) use FPM seals (code V). For the use of other kinds of fluid such as HFA, HFB, HFC, please consult our technical department. Using fluids at temperatures higher than 80 °C causes a faster degradation of the fluid and of the seals characteristics.

The fluid must be preserved in its physical and chemical characteristics.

4 - OVERALL AND MOUNTING DIMENSIONS

dimensions in mm

1	Socket hex adjustment screw: spanner 8 (standard) Clockwise rotation to increase pressure
2	Locking nut: spanner 17
3	Hexagonal spanner 24 Tightening torque 70 ÷ 100 Nm
4	OR type 130 (22.22x2.62) 90 Shore
5	Maximum screw stroke
6	Adjustment knob: K